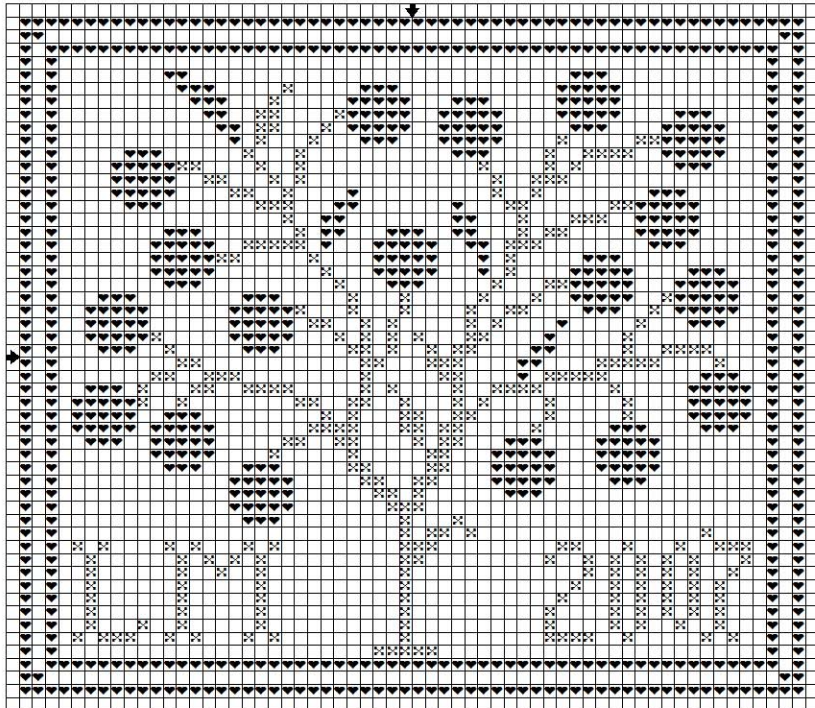


Little Tree



Try stitching this piece on a scrap of your favorite linen.

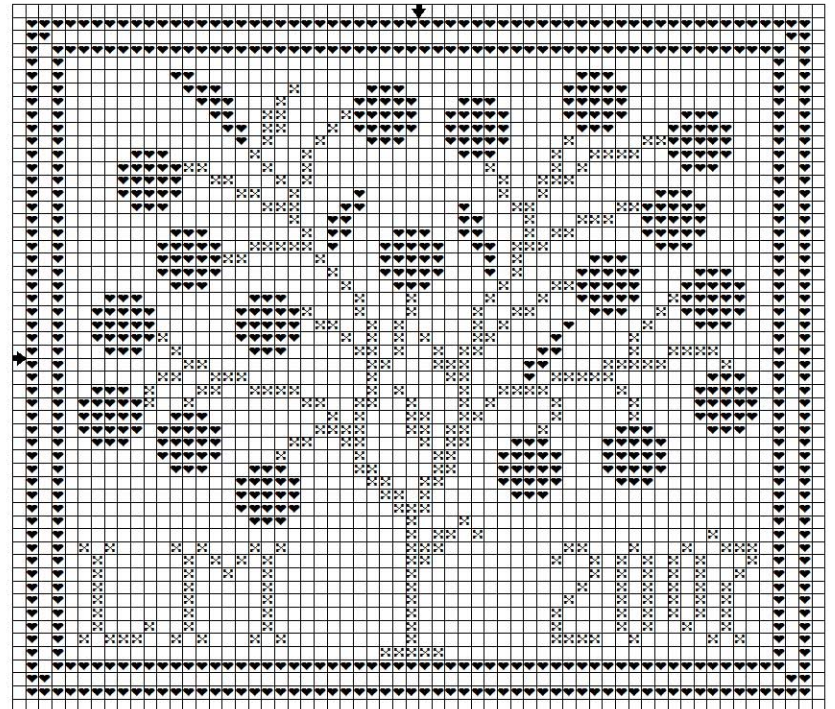
Key:

- ✕ DMC 780
- ♥ DMC 310

These colors are suggestions, use any combination that suits you!

A little free-bee from La-D-Da and
Just Stitching Needlework Shop

Little Tree



Try stitching this piece on a scrap of your favorite linen.

Key:

- ✕ DMC 780
- ♥ DMC 310

These colors are suggestions, use any combination that suits you!

A little free-bee from La-D-Da and
Just Stitching Needlework Shop