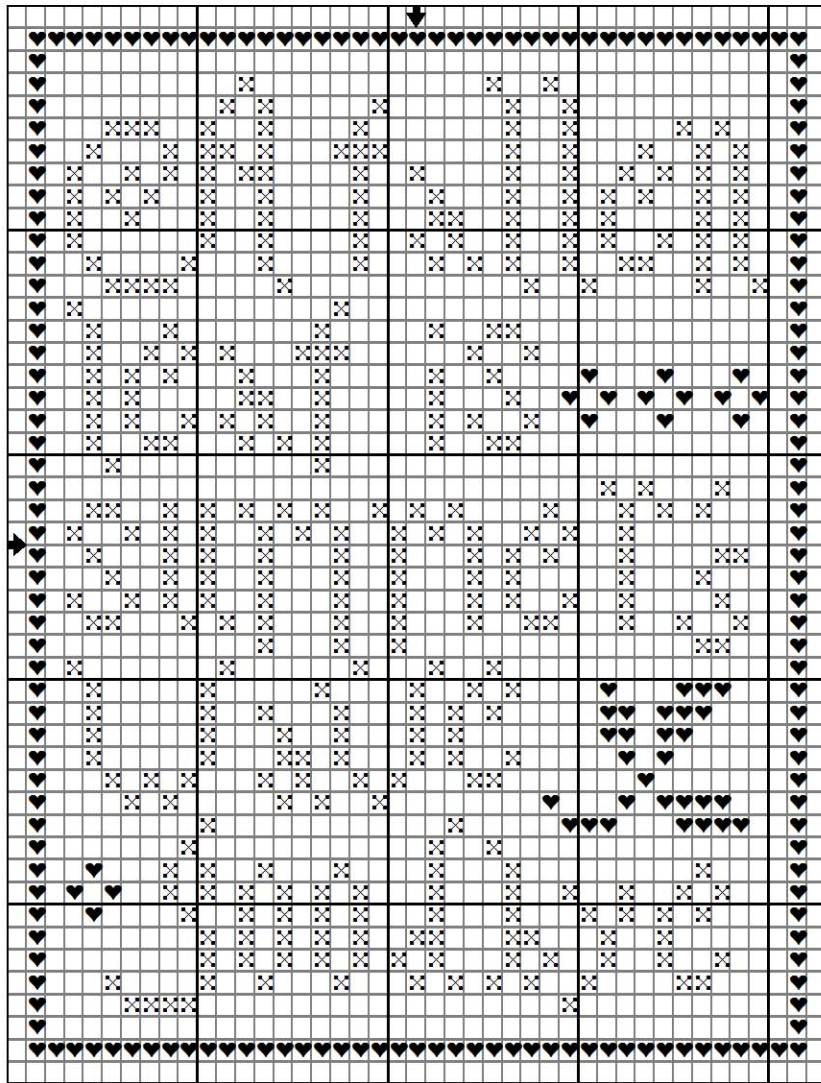


Fallen Leaf

by La-D-Da



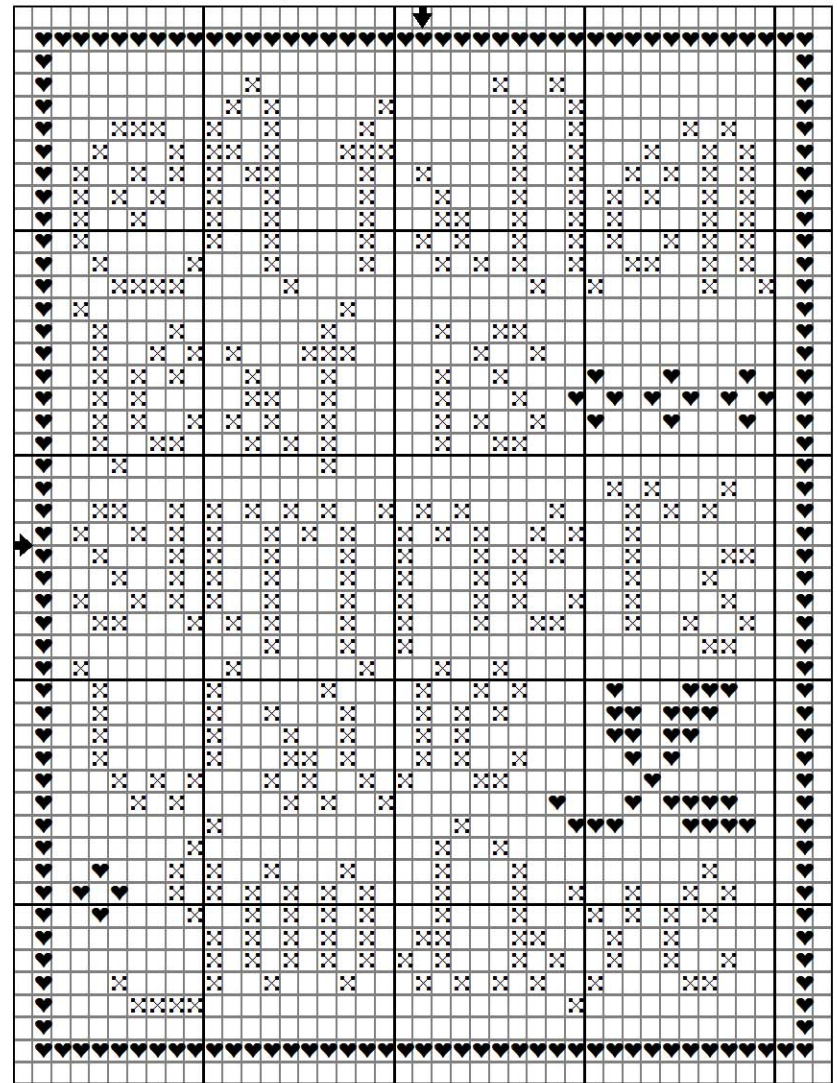
Model stitched on "Tin Roof" linen by Weeks Dye Works
using Sampler Threads.

X = Pine Woods ♥ = Cinnamon

Designed exclusively for Craft Gallery 2010!!

Fallen Leaf

by La-D-Da



Model stitched on "Tin Roof" linen by Weeks Dye Works
using Sampler Threads.

X = Pine Woods ♥ = Cinnamon

Designed exclusively for Craft Gallery 2010!!